



# Climate Action Plans Briefing

**JULIAN DEAN, NATIONAL GREEN PARTY'S CLIMATE OFFICER,  
26TH NOVEMBER 2020 WEST OXFORDSHIRE GREEN PARTY**

# Councils and climate action: state of play

## What we think we know...

- ▶ 69% declared climate emergencies
- ▶ only ½ of these looking at area wide emissions\*
- ▶ Only a handful of delivery plans

## What we don't know...

- ▶ How many effective carbon management plans?
- ▶ How many effective partnerships to drive change?
- ▶ How many using *carbon budgets*?
- ▶ How many with full range of appropriate policies?

Climate action planning includes...

Consistency in everything else the council does

Adaptation and resilience

Area-wide plan, with carbon budget approach

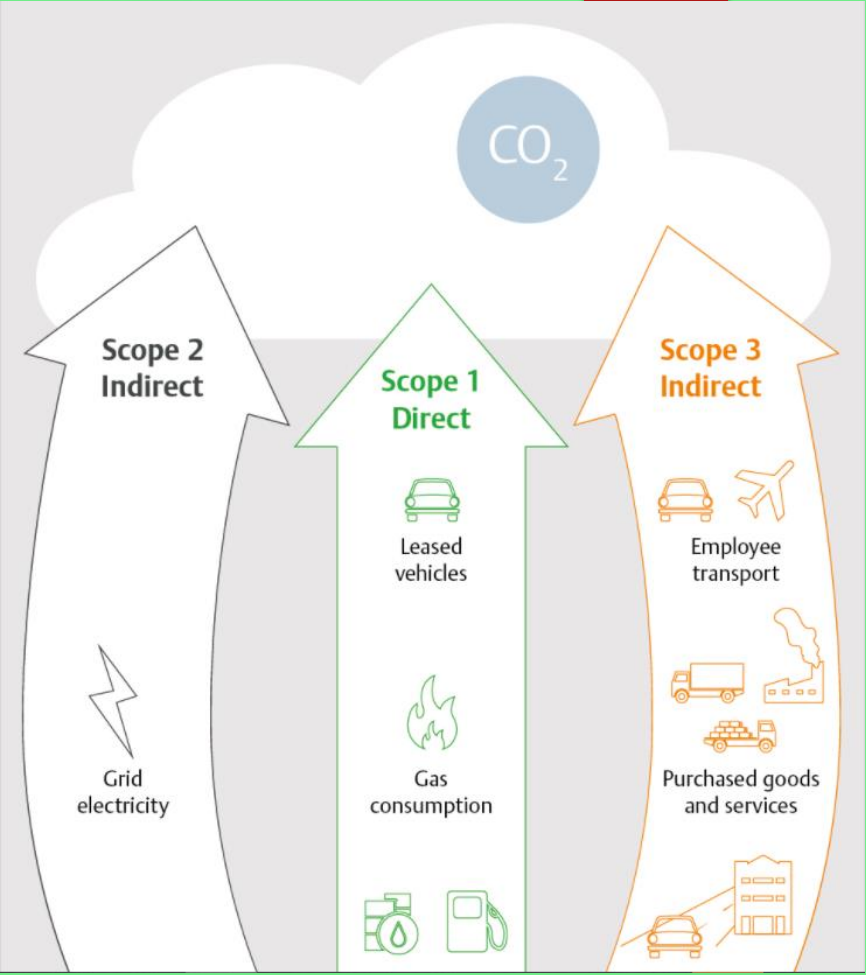
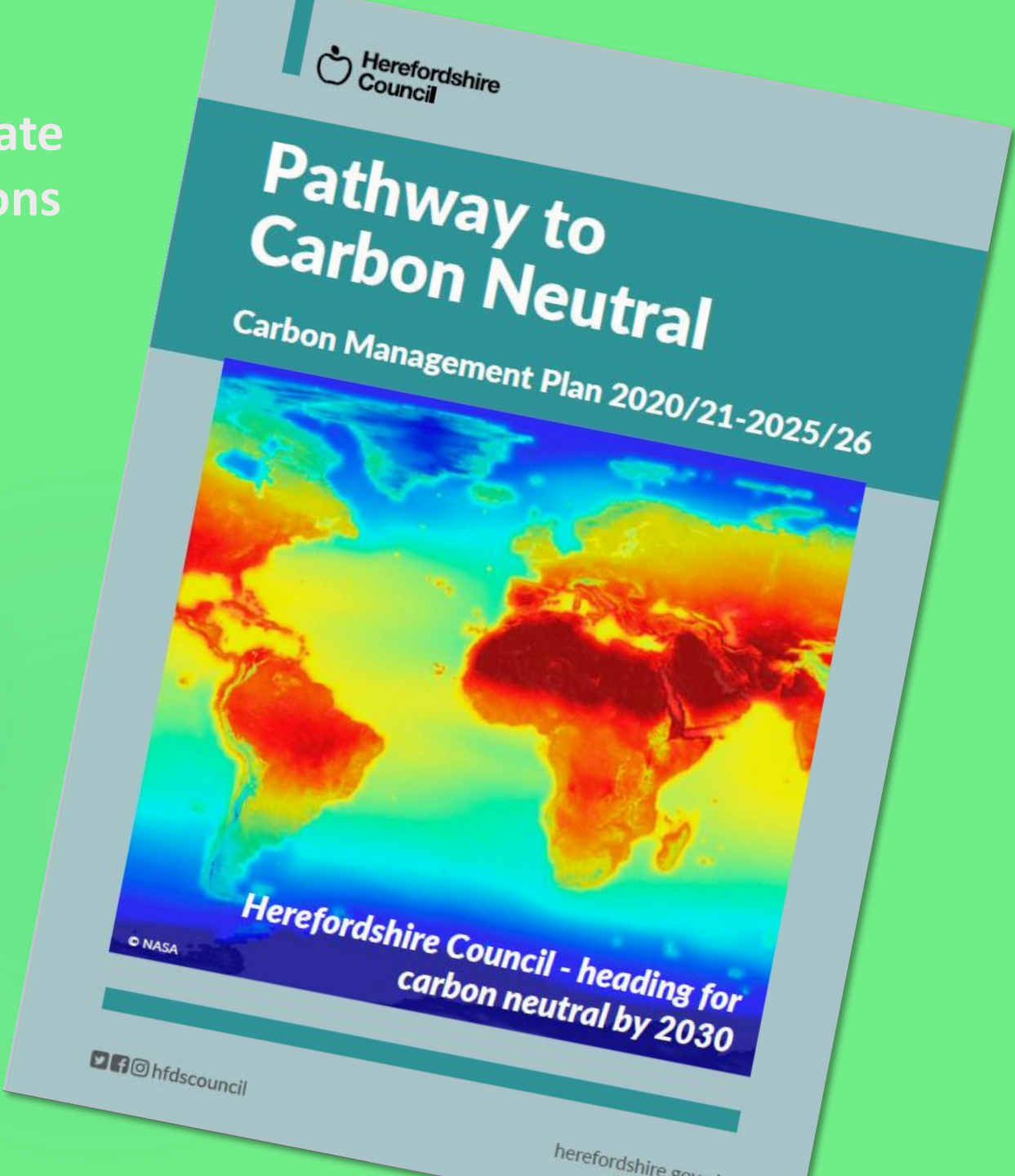
Accountability & engagement

Corporate emissions carbon neutral plan (Scope 1, 2 & 3)

Council led area-wide partnership

Always led by how this improves lives & livelihoods now

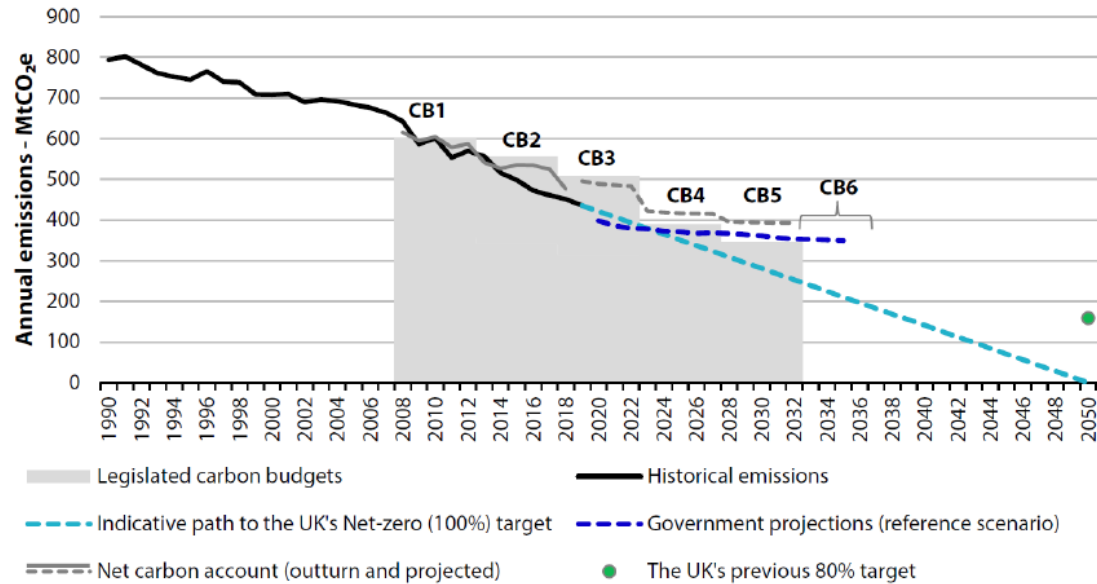
Corporate emissions plans...



... extending to contracts, suppliers, investments...

# Carbon budgets

## Emissions pathways to carbon budgets and the Net Zero target



Source: CCC analysis based on BEIS (2019) Updated energy and emissions projections 2018, and BEIS (2020) Provisional UK greenhouse gas emissions national statistics 2019.

15

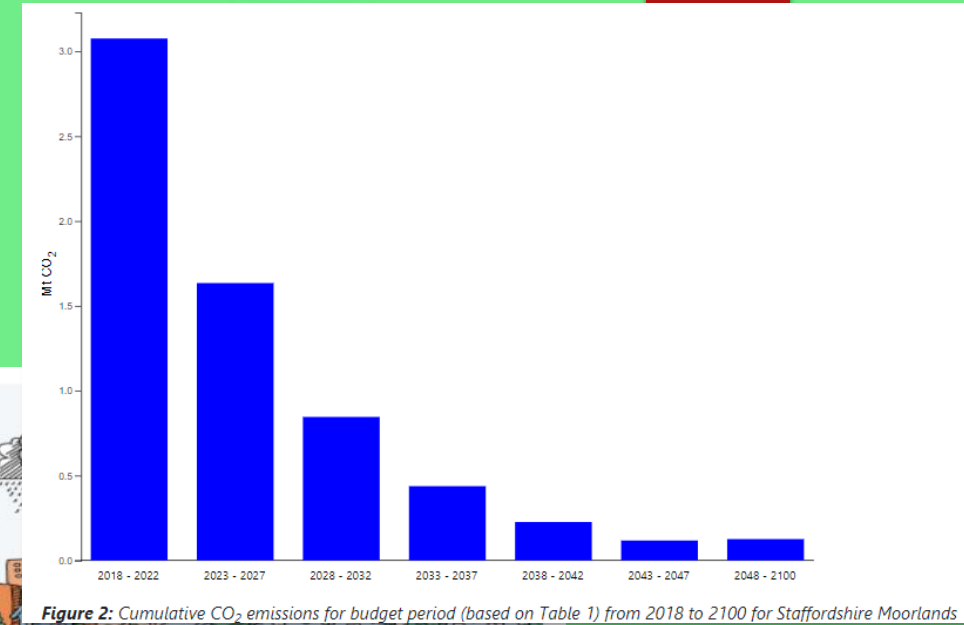


Figure 2: Cumulative CO<sub>2</sub> emissions for budget period (based on Table 1) from 2018 to 2100 for Staffordshire Moorlands

## Tyndall Carbon Budget Reports - Quantifying the implications of the United Nations Paris Agreement for local areas

Tyndall Carbon Budget Reports present recommended climate change commitments for UK local authority areas that are aligned with the commitments in the [United Nations Paris Agreement](#), informed by the latest science on climate change and defined by science based carbon budget setting.

**LEWES DISTRICT COUNCIL**  
Carbon Emissions

July 2020

**HIGH AMBITION PATHWAY: 2030 SUMMARY**

By 2030, the emissions profile for Lewes is predicted to look very different from today. Concerted local actions can have a significant effect on district emissions, making reductions of around 65%.

**Tackling residual emissions - closing the gap to carbon neutrality**

Despite the aggressive actions described, hard-to-remove emissions in industry and freight transport persist. Whilst emissions from the domestic and waste sectors are massively reduced, the scale of improvement is not enough to reach zero by 2030.

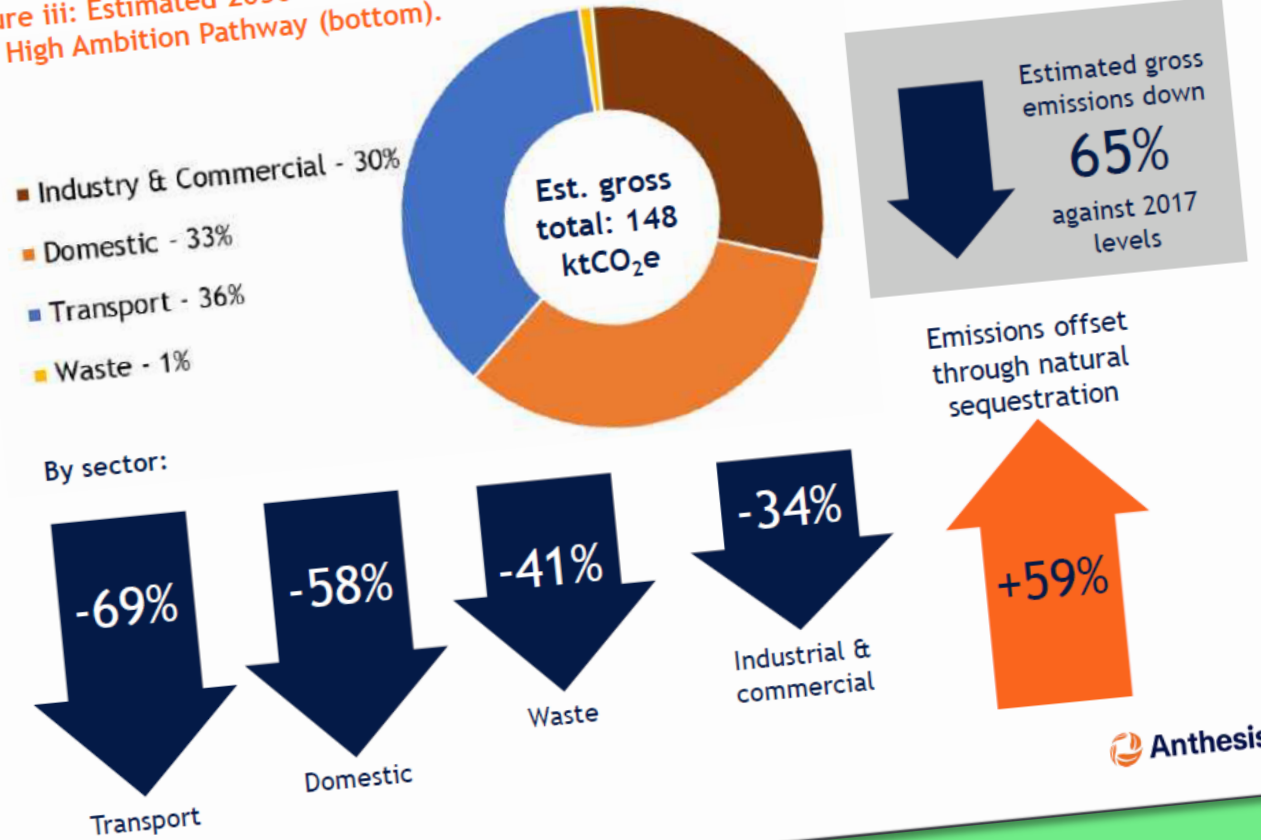
Offsetting strategies are recommended as a means of addressing these residual emissions.



Lewes District Council | Executive Summary

Adoption of the High Ambition Pathway interventions delivers emissions reductions of around **two-thirds** by 2030.

Figure iii: Estimated 2030 emissions profile (top). Emissions reductions in key sectors under the High Ambition Pathway (bottom).



The SCATTER measures define the "what" rather than the "how"; this will be explored further in a planned

# Partnerships



“Councils have convening power...”

“An approach to climate change which limits councils to thinking and acting only on their conventional duties and responsibilities ... is likely to be ineffective.”

Climate for Public Goods

# Accountability & engagement

- ▶ Benchmarking
- ▶ Public reporting
- ▶ Engaging

LOCAL PARTNERSHIPS

About Us Our Expertise Our Team News Work with us Our Resources Contact Us

## GREENHOUSE GAS ACCOUNTING TOOL

The Greenhouse Gas Accounting Tool has been developed by Local Partnerships, working with the LGA, to provide a straightforward and consistent approach for councils seeking to calculate their own carbon baseline. While currently local authority reporting on emissions is voluntary, consistent and easy calculation of an annual carbon baseline is an important part of managing the carbon in our organisations.

The tool produces summary tables and charts to help local authorities understand their most significant sources of emissions, which can then be used to prioritise actions to reduce carbon emissions.

Councils are also able to benchmark their emissions with other councils to understand how their performance compares with their peers. To participate in the benchmarking please submit your completed baseline by email to [ghgaccounting@local.gov.uk](mailto:ghgaccounting@local.gov.uk) by 31 October 2020.

INVOLVED SIGN UP

## DIGITAL TOOLS FOR PARTICIPATION: WHERE TO START?

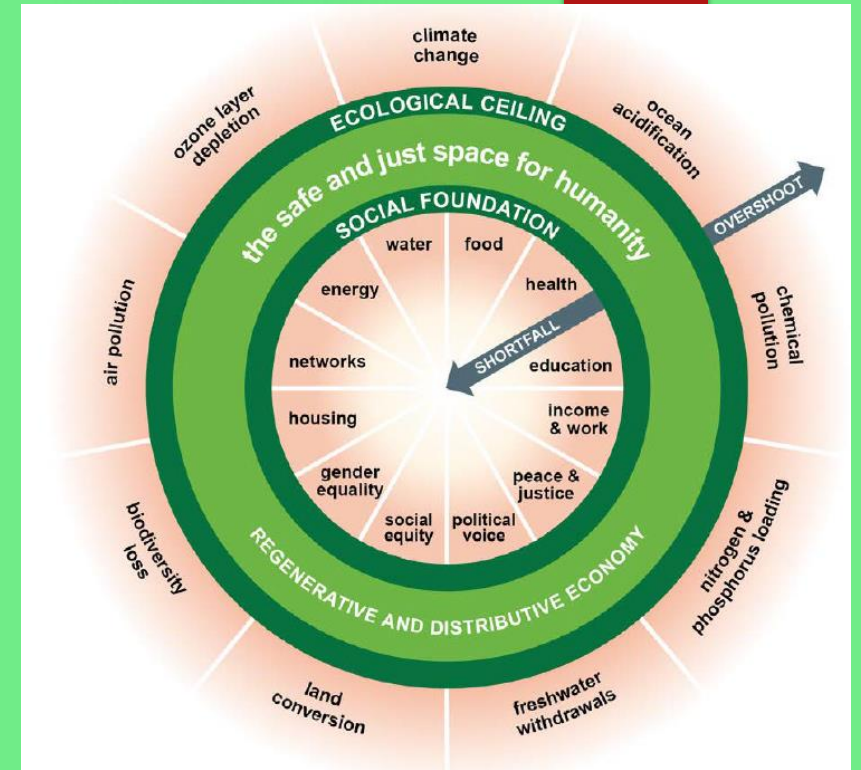
3 MAY 2020

f t in e

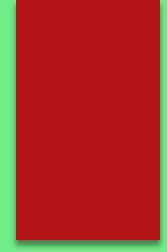




# The Green New Deal



# How to measure progress and make it a GND/Green Recovery/?



Corporate emissions plan

Area-wide plan

Area wide partnership

Accountable & engaged

*showing benefits for community and staff?*

*'green recovery' plan?... widely 'owned'?*

*for green jobs, homes & neighbourhoods, for community wealth? ...with democratic oversight?*

*With all sections of the community? ...with feedback loops?*

# Questions and comments?

Climate action planning includes...

