



Green Party

GREEN VIEW

WITNEY

THANK YOU! Key workers

NHS
& Care workers



**Councillor
Andrew Prosser**

WITNEY: PULLING TOGETHER

The public response to the coronavirus pandemic in Witney has been overwhelming.

Green Party Town Councillor Andrew Prosser said, "There are so many wonderful people in our community who have stepped up; from raising money and making crafts, producing face masks and other PPE, to organising and delivering parcels.

THANK YOU to all the amazing volunteers and community groups who have helped provide support to the area when it was most needed, and of course to our key workers, NHS, and care workers."

Please continue to observe social distancing and reduce the risk of infection!

COMMUNITY SUPPORT

- Contact information for local-support-groups **Oxfordshireallin.org**
- Contact number for vulnerable residents needing support: **01993 861077** or email **community.support@westoxon.gov.uk**
- Age UK call: **0345 450 1276**
Ageuk.org.uk/oxfordshire/
- Oxfordshire Domestic Abuse helpline: **0800 731 0055**. 24-hour National Domestic Abuse helpline: **0808 2000 247**
Email **das@a2dominion.co.uk**
- Citizens Advice West Oxfordshire call: **0300 330 9049** **Citizensadvicewestoxon.org**



Community support signs in Witney High Street

MENTAL HEALTH

If you are struggling, you're not alone. Everyone needs help with their mental health sometimes.

- Oxfordshire Mind
01865 247788
oxfordshiremind.org.uk
- Samaritans freephone on **116 123**, or **01865 722 122**
Samaritans.org
- CALM **thecalmzone.net** for men who need to talk or find information and support.
0800 58 58 58

THANK YOU TO ALL OUR KEY WORKERS

SCHOOLS CAMPAIGN

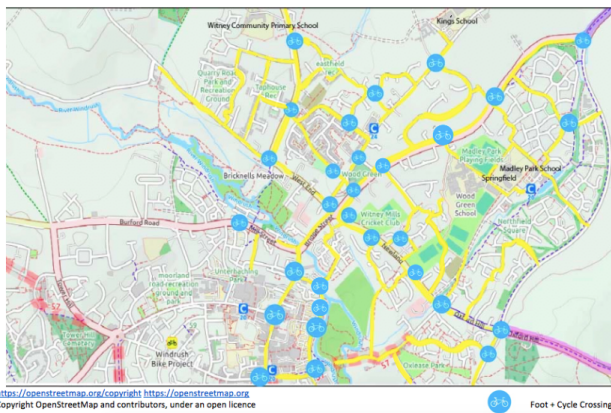
Update on the campaign and Town Council motion

Before the Lockdown hundreds of local residents had signed Andrew's petition to Oxfordshire County Council to provide safe walking and cycle routes in North Witney.

Since the campaign began the Government has announced a funding package to help increase cycle and walking capacity. In June, Andrew co-sponsored a motion to Witney Town Council calling for School Streets, 20 mph zones, and urgent reallocation of road space.



Support for the schools petition



North and East Witney cycle network

VISION FOR N&E WITNEY

Proposal for improved cycle and pedestrian network

Cycle and pedestrian routes need to join up schools, residents, and the town centre.

We are pushing for this to be completed over the next 6-24 months. This requires safe crossings, segregated paths, and a quick and convenient network for pedestrians, cyclists, and mobility scooter users.

View the detailed proposals and let us know what you think: [Facebook.com/CllrAndrewProsser](https://www.facebook.com/CllrAndrewProsser)

GET IN TOUCH AND LET US KNOW




Cllr Andrew Prosser

We are campaigning for a Green New Deal to ensure that the fight against climate change is at the heart of post-crisis economic strategies.


#BuildBackBetter


Andrew Prosser said: *"As lockdown restrictions are eased, and some normality returns, lets try and put things back better than they were before; reducing social inequality, supporting jobs, and helping to build a more vibrant community."*

 andrew.prosser@witney-tc.gov.uk

 [Facebook.com/CllrAndrewProsser](https://www.facebook.com/CllrAndrewProsser)
North Witney Community

 @aprosser

 @westoxfordshiregreenparty

 07388 825 202

This newsletter was delivered by local volunteers. If you would like to get involved or subscribe to our regular email newsletter, please contact us using the details above.

ANDREW PROSSER: WORKING HARD FOR WITNEY